



**Oldham**  
Council

## **Delegated Decision**

# **Huddersfield Road, Diggle – Car Park Order**

Report of: Deputy Chief Executive – People and Place

Officer contact: Alister Storey, Senior Traffic Engineer

[Alister.Storey@Unitypartnership.com](mailto:Alister.Storey@Unitypartnership.com)

**13 August 2021**

### **Purpose of Report**

The purpose of this report is to consider the introduction of a traffic regulation order on the new car park being constructed on Huddersfield Road, Diggle as part of the works associated with the new Saddleworth School.

### **Recommendation**

It is recommended that the proposals detailed in the schedules at the end of this report be approved.

---

## **Huddersfield Road, Diggle – Car Park Order**

### **1 Background**

- 1.1 The highway works associated with the new Saddleworth School introduce parking, waiting and loading restrictions on Huddersfield Road. The new restrictions will limit the ability of a number of residents to park on the highway.
- 1.2 A new residents parking area is being created for several properties to the west of Huddersfield Road. A land deal being processed relating to properties to the east side of Huddersfield Road which will facilitate parking at the rear of their properties.
- 1.3 There is a planning requirement for the provision of a drop off area for the new school which will double as a public “free to use” car park. The new 19 space car park will be located to the south of the residents parking area and will be accessed by the same access road as the residents parking area. The car park is the area marked “B” in the drawing at the end of this report.
- 1.4 The new car park will double up as an off-street parking facility for other residents of Huddersfield Road and will also be used by visitors to the school.
- 1.5 At present it is not proposed to introduce any time restrictions on parking in the car park, as residents whose vehicles that are displaced by new parking restrictions will need to use the facility. This may be reviewed if the car park capacity is overly affected by residents’ vehicles.

### **2 Options/Alternatives**

- 2.1 Option 1: To approve the recommendation
- 2.2 Option 2: Not to approve the recommendation

### **3 Preferred Option**

- 3.1 The preferred option is Option 1

### **4 Justification**

- 4.1 The new car park and its associated regulations are required to satisfy planning conditions and to provide a parking facility for residents’ vehicles displaced by on street restrictions.

### **5 Consultations**

- 5.1 G.M.P. View - The Chief Constable has been consulted and has no objection to this proposal.

- 5.2 T.f.G.M. View - The Director General has been consulted and has no comment on this proposal.
- 5.3 G.M. Fire Service View - The County Fire Officer has been consulted and has no comment on this proposal.
- 5.4 N.W. Ambulance Service View - The County Ambulance Officer has been consulted and has no comment on this proposal.

## 6 **Comments of Saddleworth North Ward Councillors**

- 6.1 The Ward Councillors have been consulted and Councillor P Byrne supports Option 1.
- 6.2 Councillor L Lancaster has made comment, can I please record my support for the Car Park Order being created as per 4.1, however note regret that dedicated parking spaces have not been provided for **\*all\*** affected residents on Huddersfield Road.

## 7 **Financial Implications**

- 7.1 The cost of introducing the Traffic Regulation Order (TRO) is £1,200.00. This will be met from the parking services existing budget provision. The road markings are already in place and the annual maintenance costs are estimated to be in the region of £100 per annum.
- 7.2 The site will be monitored by the Council's parking enforcement contractor NSL, at no additional cost to the service. There may be additional income generated from Parking Charge Notice (PCN's), we are currently unable to quantify this, but it is expected to be minimal.

(Matthew Kearns – Senior Accountant)

## 8 **Legal Services Comments**

- 8.1 Where for the purpose of relieving or preventing congestion of traffic it appears to the Council necessary to provide suitable parking places for vehicles, under section 32 of the Road Traffic Regulation Act 1984, the Council has the power to provide off street parking places together with means of entrance to and egress from them. Under section 35 of the Act, the Council may impose conditions on which an off street parking place may be used.
- 8.2 In addition to the above, under section 122 of the Act, it shall be the duty of the Council so to exercise the functions conferred on them by the Act as to secure the expeditious, convenient and safe movement of vehicular and other traffic (including pedestrians) and the provision of suitable and adequate parking facilities on and off the highway. Regard must also be had to the desirability of securing and maintaining reasonable access to premises, the effect on the amenities of any locality affected and the importance of regulating and restricting the use of roads by heavy commercial vehicles so as to preserve or

improve the amenities of the areas through which the roads run, the strategy produced under section 80 Environmental Protection Act 1990 (the national air quality strategy), the importance of facilitating the passage of public service vehicles and of securing the safety and convenience of persons using or desiring to use such vehicles and any other matters appearing to the Council to be relevant. (A Evans)

## **9 Co-operative Agenda**

9.1 In respect of this proposal there are no Co-operative issues or opportunities arising and the proposals are in line with the Council's Ethical Framework

## **10 Human Resources Comments**

10.1 None.

## **11 Risk Assessments**

11.1 None.

## **12 IT Implications**

12.1 None.

## **13 Property Implications**

13.1 None.

## **14 Procurement Implications**

14.1 None.

## **15 Environmental and Health & Safety Implications**

15.1 Energy – Nil.

15.2 Transport – Nil.

15.3 Pollution – Nil.

15.4 Consumption and Use of Resources – Nil.

15.5 Built Environment - Height restriction barriers will be erected on the entrance and exit to the car park to restrict vehicles higher than 2.3 metres are prohibited from entering the car park.

15.6 Natural Environment – Nil.

15.7 Health and Safety – Nil.

16 **Equality, community cohesion and crime implications**

16.1 Nil.

17 **Equality Impact Assessment Completed?**

17.1 No.

18 **Key Decision**

18.1 No.

19 **Key Decision Reference**

19.1 Not applicable.

20 **Background Papers**

20.1 The following is a list of background papers on which this report is based in accordance with the requirements of Section 100(1) of the Local Government Act 1972. It does not include documents which would disclose exempt or confidential information as defined by the Act:

None.

21 **Proposal**

21.1 It is proposed that a Traffic Regulation Order be introduced in accordance with the following schedule and drawing number 1068035-0100-B-402.

Schedule

Drawing Number 1068035-0100-B-402

Add to the Oldham Borough Council Minor Amendment Order 2004  
Schedule 4, Part II, Schedule 5a.

Col 1	Col 2	Col 3	Col 4	Col 5	Col 6	Col 7
Item No.	Location of parking place	Classes of motor vehicles	Days and Hours of operation	Maximum period of waiting	Controlled hours	Rate of Charge
	Huddersfield Road (East Side), Diggle opposite properties number 37 to 49	Vehicles	24 hours Daily	None	None	No Charge

**APPROVAL**

**Decision maker**

Signed \_\_\_\_\_



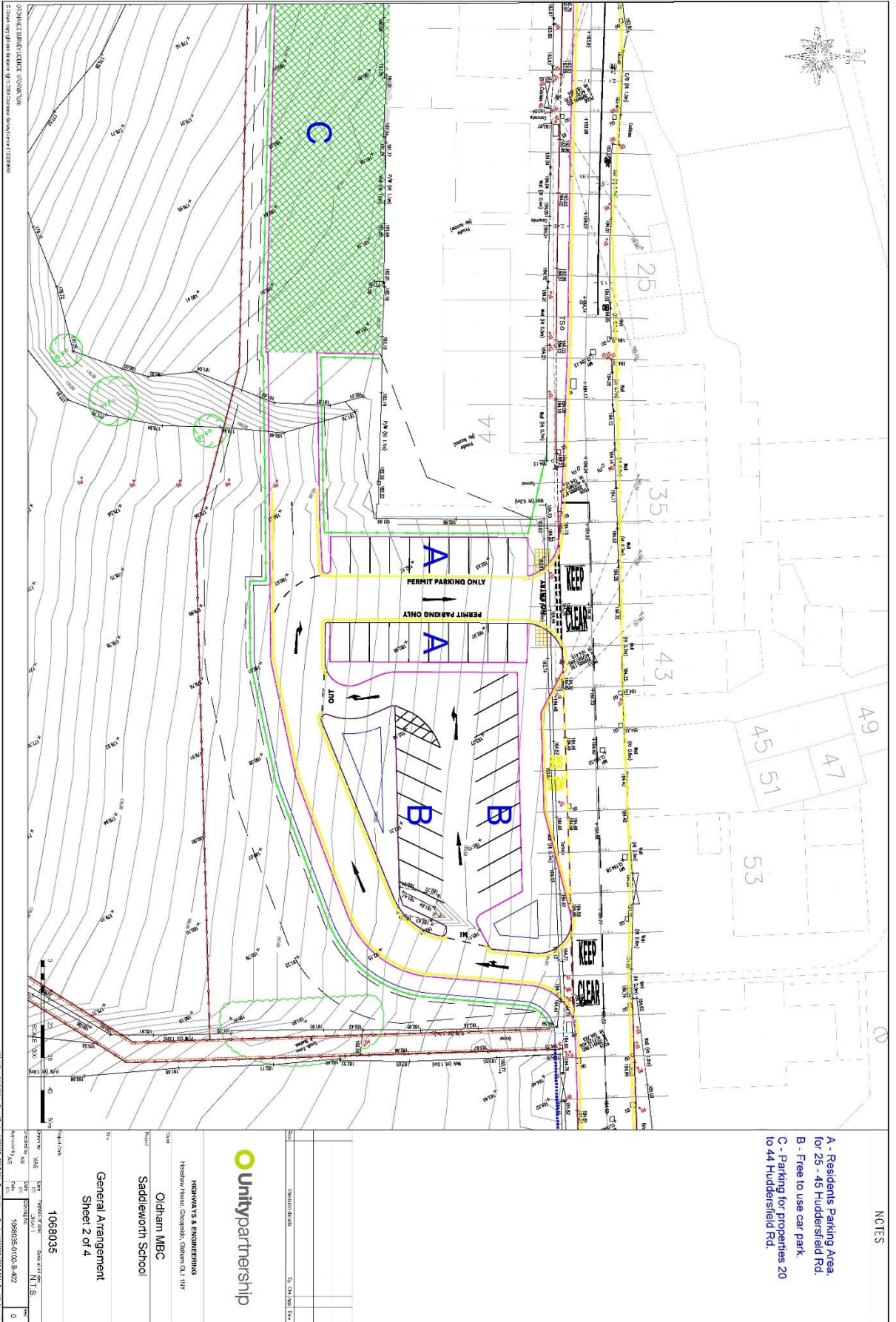
\_\_\_\_\_  
Cabinet Member,  
Neighbourhoods

Dated 16<sup>th</sup> August 2021

**In consultation with**

Signed: *Hockwood.*  
Deputy Chief Executive

Dated: 17 August 2021



NOTES

- A - Residents Parking Area for 25 - 45 Huddersfield Rd.
- B - Free to use car park.
- C - Parking for properties 20 to 44 Huddersfield Rd.



**HIGHWAYS & ENGINEERING**  
 Huddersfield, Halifax, Cleckheaton, Ossett, D.L.I. NY  
 Oldham MBC  
 Saddleworth School  
 General Arrangement  
 Sheet 2 of 4

1068035	N.T.S.
1068035/01/04-002	0